

Installation Instructions for the Landing Gear Leg Lock (and Combination Version)

If you have a Landing Gear Leg lock with a changable combination lock:

Setting your combination The lock is preset from the factory at 0000.

1. Unlock the mechanism and insert the special key in the keyhole, pressing in firmly, and turn one quarter turn in either direction. (Key will click into place.)
2. Set numerical combination. Return the key to original position, remove from locking device and store in a safe place. **Remember/record the combination you have selected!**
3. To lock, depress mechanism and scramble the numbers.

Installing The Landing Gear Leg Lock

1. Position the landing gear crank handle as shown. (Figure 1)
2. With the locking plate removed, install the Landing Gear Leg Lock main body over the cranking handle as shown. (Figure 2)
3. Slide the locking plate behind the main body in place while having the locking tab aligned with the lock mechanism. (Figure 3)

IF you have a short cranking handle and it prohibits you from installing the locking plate, please turn the crank 180 degrees so the handle is coming outward from under the trailer. The locking plate will then slide in place.

4. Once properly fitted, depress the locking button. Or with the changeable combination lock, scramble the numbers and depress; therefore securing the lock in place.(Figure 4)
5. Congratulations! Your Landing Gear Leg Lock is installed. (Figure 5) Secure the keys in a safe place.

Remove The Landing Gear Leg Lock

1. Insert key and turn one quarter turn clockwise or turn dials so lock mechanism "pops out". (Slight adjustment may be needed to remove pressure from the pin).
2. Carefully slide the locking plate from behind the main body while supporting it.(Figure 3)
3. Remove the Landing Gear Leg Lock, reinstall the locking plate and store in a safe and secure place.

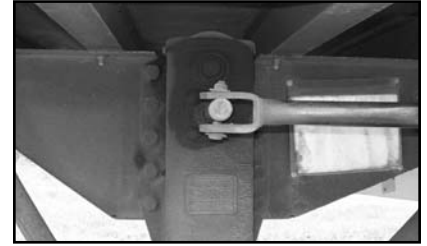


Figure 1



Figure 2



Figure 3



Figure 4



Figure 5

The Equipment Lock Company
Toll Free: 1.866.565.4887
www.equipmentlock.com
info@equipmentlock.com